

HAVEN

3  
1  
7



**OVERVIEW & REGULATIONS**



# WELCOME TO STAR HAVEN, THE ROCKLAND ASTRONOMY CLUB'S EXCLUSIVE NEW DARK SKY OBSERVING & CAMPING SITE



## Overview

Located near the rural Catskills town of Livingston Manor, New York, this 1/2-acre site is a South-facing, down-sloped mountainside at a 2,040 ft. elevation, giving it a superlative high and dry prospect in the valley. The site has an elevation, Sky Quality Meter rating, and NELM almost as high as Cherry Springs, PA (a five-hour drive), and is superior to any of RAC's other dark sky sites. Treelines are distant, so sky objects are unobstructed from most angles. Best of all, Star Haven is under an hour and a half drive from Rockland County. Bonus: there are NO park rangers/police to contend with!

## Star Haven Location

317 Mud Pond Road, Livingston Manor, NY 12758

GPS Coordinates: [41.94735398047196, -74.8104135823372](#)

Google Map: <https://goo.gl/maps/NdB3v76yEqZhdabD6>

You will see a large white stencil "HAVEN" sign at the entrance. Drive about 50 feet and look for a grass driveway with a small black "Star Haven" sign (above) on your left. Turn in there, then make the first right onto the Observing Field (unless it's after dark).

## Rules & Regulations

### YOU MUST BE A CURRENTLY REGISTERED RAC MEMBER

with paid membership to access and utilize this site. To become a RAC member, renew, or sign up new members, please visit:

<https://rockland-astronomy-club.myshopify.com/collections/membership>

### GUESTS

You may bring "guest observers" or non-RAC members ONE TIME ONLY as an introduction to the site. If you or they want to return, you/they must register to become a RAC member. To observe or camp with family, join/upgrade as a "Family" member.

### COMFORT STATION

**There is an initial Star Haven Signup required for RAC members to use the site** and sanitary Comfort Station. Before visiting the site, please send an email with your name, email address and cell phone number to: [events1@rocklandastronomy.com](mailto:events1@rocklandastronomy.com) to receive the season combination lock code for the Comfort Station. The grey shed includes a composting toilet, a hand-washing station, and a 50-gallon rainwater barrel with non-potable water for cleaning purposes. **Always lock up** if you are the last one on site. A large picnic table and a fire pit are on our site as well for general use.

## RESPECT FOR OTHERS ON SITE

Haven for Humanity, the private non-profit from whom we lease the space, has half a dozen rentable camping and tented sites in the vicinity of our observing field. It is imperative that we always conduct ourselves with respect towards other campers by being thoughtful, quiet, and using discretion late at night when talking, closing car doors, and using parking lights when coming and going so as not to disturb anyone's enjoyment. You can book one of their sites here: <https://bit.ly/3BL9Yf1> **Note:** There are also two family campgrounds within 20 minutes of the observing site.

## STAR HAVEN OUTREACH

Any RAC members on the property will be considered 'Star Haven Staff,' and if asked, must identify themselves as such. Part of our mission is science outreach, so if you encounter campers, or anyone on site from outside the Club, invite them to join in for some observing, educational discussion, or simple sky tours, etc.

## THIS IS A 'CARRY IN, CARRY OUT' FACILITY

**Don't litter.** Any belongings, food, or refuse you bring to the site must leave the site with you when you exit. No exceptions. Please be respectful and pick up after yourself.

## PARKING & EQUIPMENT SETUP

**There is room on the observing field for nine (9) parked vehicles and about fifteen (15) telescopes.** Field parking spots will be occupied on a "first-come, first serve" basis. Additional parking is available adjacent to the Observing Field, twenty yards away. **NO** parking is allowed anywhere else at Star Haven than the Observing Field, or our 'Overflow Parking Lots.' (Please see field maps for all designated parking areas.)

**Please arrive BEFORE dark to park on the field in one of the ten designated spots facing West (see map) and set up.** If all observing field parking spots are occupied when you arrive, you may drive through the site from East to West to offload your equipment before dark, then park in the Overflow Parking Lots A and B. To preserve night vision, if you arrive after dark, we suggest using the overflow parking and cart your scopes to the field to set up your observing equipment, or stay at the Overflow Lot to observe. All cars using "Haven Road" Overflow Parking Lots must park **facing North** and at least **4 feet** from the edge of the road. When leaving these overflow areas, back out and head East to the main site entrance on Mud Pond Road.

## CAMPING

RAC members are permitted to camp **ONLY** on the Observing Field, using tents or your vehicle for overnight stays. You may camp here at any time of the month or year. **NO other locations on the Haven property are allowed for camping use.** Space is limited, so come early to set up camp: this is a "first come, first serve" camping option. If tent camping, please set up near your vehicle and scope.

## QUIET HOURS

The observing site quiet hours are from **Dusk to Dawn**. This is an active camping area, so keep voices and noise lower after dark.

**NO Loud Music** playing at any time, especially after dark.

**NO Pets** on the Observing Field. **Tick spray precautions are highly recommended!**

**NO Smoking**. This site is a Smoke Free Zone.

**NO Bikes are allowed on Observing Field at ANY time.**

## LIGHTS

**Red Lights Only** after dark. Use red filters and lamps.

**NO White Lights** anywhere after dark (no exceptions!). Please put red filters on your interior car lights if they cannot be turned off (yeah, we know).

**NO Camp Fires** on observing nights after dark.

## LOCAL AMENITIES & ACCESS TO SERVICES

Nearby Livingston Manor (11 minutes away) is blessed with a full grocery store/market, several good sit-down/takeout restaurants/pizzerias, two micro-breweries(!), two gas stations, hardware store, ice cream stand, bakery, Sunday organic farmer's market, pharmacy, boutiques, B&B, an Inn, and even a public water hole off Main Street for a cool dip. There are also two family campgrounds within 20 minutes of the observing site.

## DARK SKY COMPARISON

*S. Reeves (SQM), K. Murdock (calcs) 6/22/21*

Location	SQM range		NELM range*	
	Low	High	Low	High
1. Cherry Springs, PA	21.7	21.8	6.9	7.0
<b>2. Star Haven, Livingston Manor, NY</b>	<b>21.43</b>	<b>21.5</b>	<b>6.8</b>	<b>6.8</b>
3. Stellafane, Springfield, VT	21.33	21.47	6.7	6.8
4. Peppermint Park, Plainfield, MA (SSP)	21.27	21.28	6.7	6.7
5. Taghkanic State Park, Ancram, NY	21.18	21.21	6.6	6.7
6. Wawayanda State Park, NJ	20.14		6.1	
7. Anthony Wayne Parking Lot, PIP, NY	20.1		6.1	



*Photo: Vincent Coulehan, Taken at Star Haven, Stellarvue 80 mm ED with a Canon 60Da, total 1 hour tracking on a iOptron EQ-45 mount*

**Notes** SQM: Sky Quality Meter. NELM: Naked-eye limiting magnitude. NELM is calculated as:  $[(SQM - 8.89)/2] + 0.5$  (Mel Bartels). \*NELM is subjective, dependent on the eyesight of the observer. Star Haven has only one significant light dome, from Liberty, NY, to the South. Its sky glow is minor, limited to 15 - 20 degrees above the horizon.

## KUDOS

Longtime RAC member and dark sky enthusiast (now Board Member) Scott Reeves discovered the site in late 2019. Working with RAC Board Members Mies Hora, Keith Murdock, and many other dedicated Club volunteers, this stunning celestial observing/campsite has become an exciting reality for the Rockland Astronomy Club.



Prepared by Mies Hora  
Executive Committee, Board of Directors  
Rockland Astronomy Club, Inc.  
Questions & Suggestions: [events1@rocklandastronomy.com](mailto:events1@rocklandastronomy.com)



# Haven for Humanity



Star Haven Entry



Utility Pole

Mud Pond Road

Overflow Parking Area A

Utility Pole

Grass Access Paths

Overflow Parking Area B

Comfort Station

Stone Area

Wood Chips

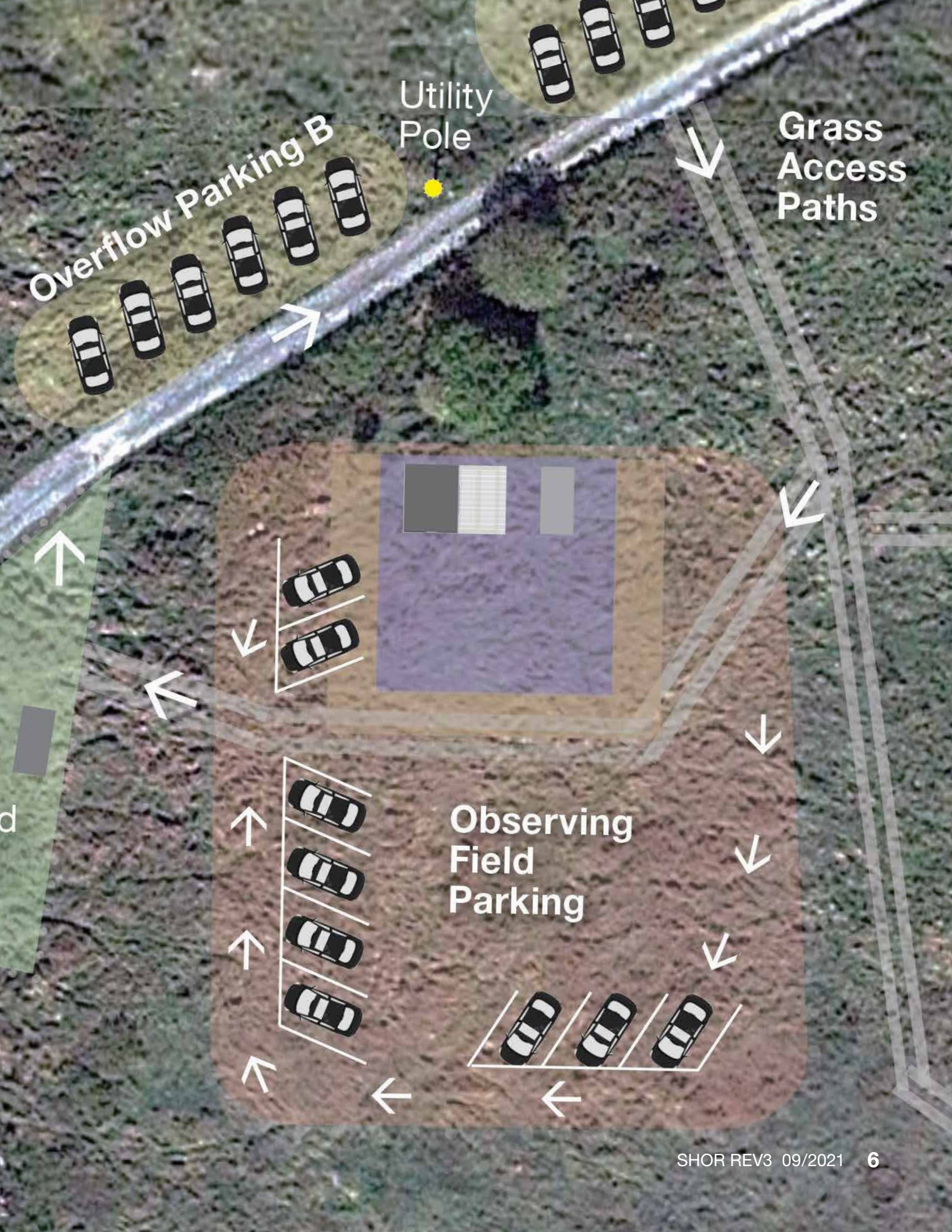
HH Camp Site B

Mowed Picnic Area

RAC Grass Observing Field  
1/2 acre

HH Camp Site C





Overflow Parking B

Utility Pole

Grass Access Paths

Observing Field Parking